

Pin Type Load Cell



FEATURES

- # Capacity range: ,100,500,1000,and 5000kg
- # Cylindrical shape for easy installation
- # High accuracy
- # High overload capacity
- # Stainless steel construction

DESCRIPTION

The M-10 load cell has several features that clearly distinguish it from other load cells. It is easy to install and extremely accurate, even when subjected to extreme pivotal forces and severe environmental conditions.

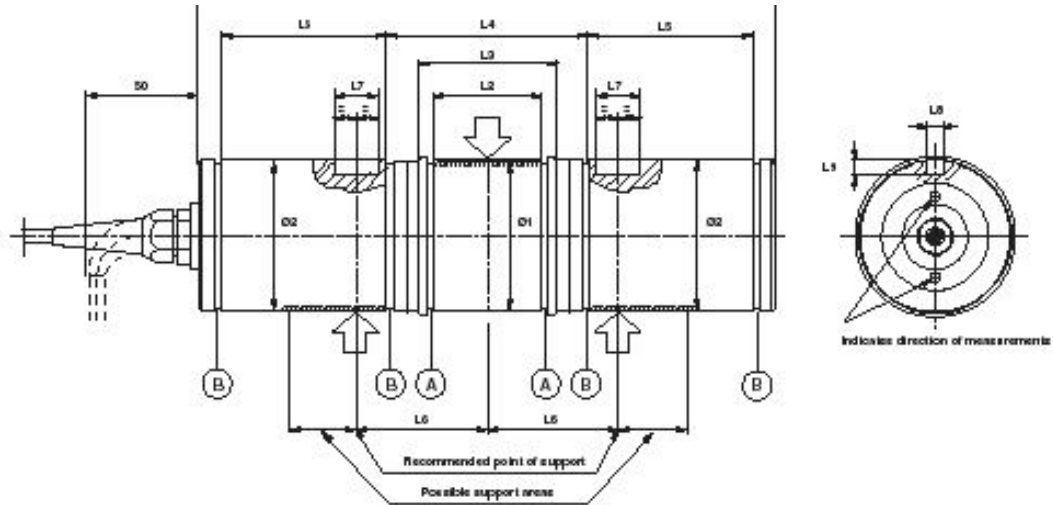
APPLICATIONS

Crane scales
Conveyors
High- capacity storage bins
EOT/HOT Crane Scale

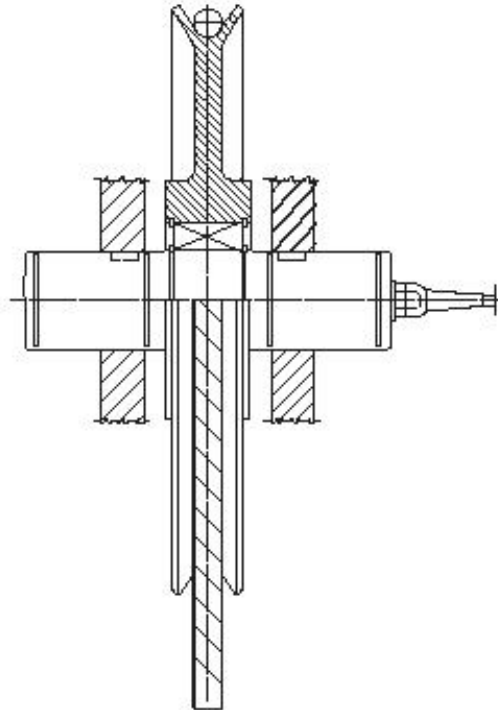
SPECIFICATIONS

<i>Rated load (R.L.)</i>	100, 500, 1000, 5000 kg, 10 T,20T,50T
<i>Combined error (terminal)</i>	± 0.1 % of R.O.
<i>Repeatability</i>	0.02 % of R.O.
<i>Overload safe</i>	100* % of R.L.
<i>ultimate</i>	200* % of R.L.
<i>Sideload safe</i>	100* % of R.L.
<i>Input voltage recommended</i>	10 V DC
<i>maximum</i>	15 V DC
<i>Input resistance</i>	382 ± 3 ohm
<i>Output resistance</i>	350 ± 3 ohm
<i>Rated output (R.O.)</i>	2 mV/V or 3mV/V
<i>Zero balance</i>	± 5 % of R.O.
<i>Temperature range</i>	+25 to + 80 °C
<i>Temperature effect on output</i>	± 0.01 % of output/ °C
<i>on zero balance</i>	± 0.005 % of R.O./ °C
<i>Insulation resistance at 200 V DC</i>	> 4 Gohm
<i>Material</i>	Stainless steel / Die steel
<i>Degree of protection</i>	IP 67 / IP65
*Referring to recommended loading case	

OUTLINE DIMENSIONS



INSTALLATION EXAMPLE



APPLICATIONS

